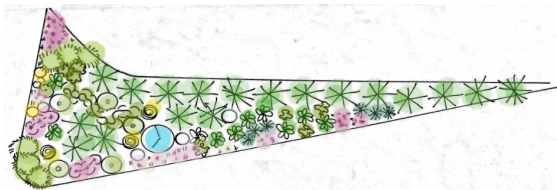
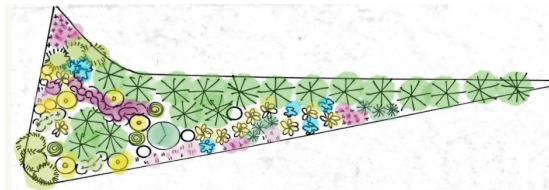
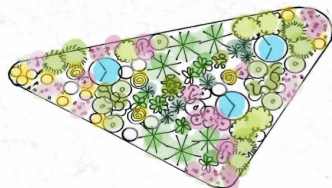


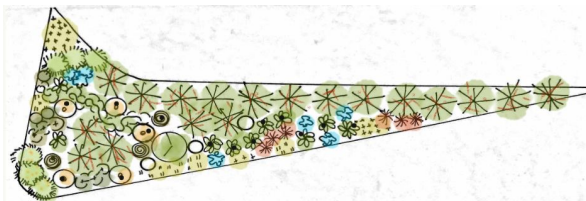
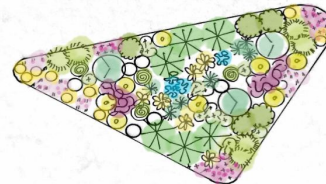
Designing With Colorful Native Plants



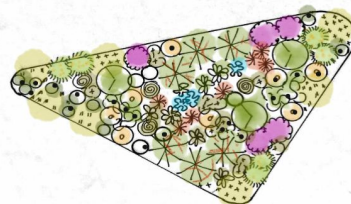
April - June



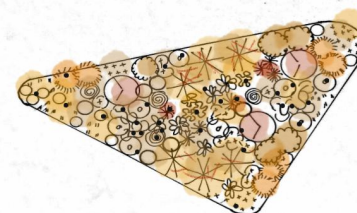
July - September



October - November



December - February



Designing With Colorful Native Plants



Examples of Native Plants to Kansas selected by color			
Blue, Purple, Lavender & Violet	Pink, Red & Orange	White, Green & Greenish White	Yellow
Symphyotrichum oblongifolium (Full Sun)	Echinacea pallida (Full Sun, Dry)	Ceanothus americanus (Full/Part Sun, Dry)	Solidago sp (Full Sun, Dry)
Salvia azurea (Full Sun)	Lobelia cardinalis (Part Shade/Moist)	Symphyotrichum urophyllum (Full Sun,Ave.)	Rudbeckia hirta (Full Sun, Dry)
Lobelia siphilitica (Part Shade, Moist soils)	Veronicastrum virginicum Full Sun, Dry)	Sanguinaria canadensis (Shade, Moist)	Gutierrezia sarothrae (Full Sun, Dry)
Phlox divaricata (Part shade, Open woods)	Castilleja coccinea (Full Sun, Moist)	Boltonia asteroides (Full Sun, Moist)	Rudbeckia triloba (Part Shade, Moist)
Verbena hastata (Full Sun, Moist soils)	Spigelia marilandica (Full/Part Shade)	Eryngium yuccifolium (Full Sun, Dry to Moist)	Silphium laciniatum (Full Sun, Dry)
Baptisia australis (Full Sun)	Callirhoe alcaeoides (Full Sun, Dry)	Penstemon digitalis (Full Sun, Dry)	Silphium perfoliatum (Part Shade, Moist)
Mertensia virginica (open woods, moist)	Allium stellatum (Full Sun, Dry)	Sambucus nigra (Full/Part Shade, Moist)	Ratibida pinnata (Full Sun, Dry)
Tradescantia ohiensis (Full Sun/Part Shade)	Phlox pilosa (Full Sun, Moist to Dry)	Pycnanthemum verticillatum (Part Shade)	Coreopsis pubescens (Part Shade, Moist)
Glandularia canadensis (Full Sun, dry soils)	Asclepias purpurascens (Full Sun, Dry)	Antennaria neglecta (Full Sun, Dry)	Coreopsis grandiflora (Full Sun, Dry)
Liatris sp. (Full Sun)	Silene regia (Full Sun/Part Shade,Dry)	Arisaema triphyllum (Shade, Moist)	Helianthus hirsutus (Full Sun, Moist-Dry)
Echinacea purpurea (Full Sun, Moist)	Asclepias speciosa (Full Sun, Moist)	Podophyllum peltatum (Shade, Moist to Dry)	Heliopsis helianthoides (Full Sun, Dry)
Amorpha fruticosa (Full Sun, Moist)	Asclepias incarnata (Full Sun, Moist)	Verbena simplex (Full Sun, Dry)	Ratibida columnifera (Full Sun, Dry)
Dalea purpurea (Full Sun, Dry Soils)	Aquilegia canadensis (Full sun/Part Shade)	Asclepias stenophylla (Full Sun, Dry)	Helianthus grosseserratus (Full Sun, Moist)
Callirhoe involucrata (Full Sun, Dry Soils)	Mirabilis nyctaginea (Full Sun, Dry)	Hibiscus moscheutos (Full Sun, Wet)	Helenium flexuosum (Full Sun, Moist)
Geranium maculatum (Part Shade, Moist)	Asclepias tuberosa (Full Sun, Dry)	Pycnanthemum tenuifolium (Full Sun, Moist)	Helianthus pauciflorus (Full Sun, Dry)
Trillium viridescens (Part Shade, Moist)		Euphorbia marginata (Full Sun, Dry)	Rudbeckia subtomentosa (Full Sun, Moist-Dry)
Monarda fistulosa (Full Sun, Dry/Moist)		Dalea candida (Full Sun, Dry)	Senecio integerrimus (Full Sun, Moist-Wet)
Asarum canadense (Shade, Moist)		Yucca glauca (Full Sun, Dry)	Helianthus salicifolius (Full Sun, Dry)
Vernonia baldwinii (Full Sun, Dry)		Ceanothus americanus (Full/Part Sun, Dry)	Packera obovata (Shade, Moist)
Viola nephrophylla (Part Shade,Moist)			

Books:

Native Plants of the Midwest, Alan Branhagen

The Midwestern Native Garden: Native Alternatives to Nonnative Flowers and Plants,
Charlotte Adelman and Bernard L. Schwartz

Planting: A New Perspective, Noel Kingsbury and
Piet Oudolf

*Gardens of the High Line: Elevating the Nature of
Modern Landscapes*, Piet Oudolf and Rick Darke

Internet Links:

grownative.org

monativeplants.org

kswildflower.org

kansasnativeplantsociety.org

kansasnativeplants.com

oudolf.com